

Storm Games

Showbiz Lotto B3a Neon Cabinet



SAFETY NOTICES

The following safety instructions apply to all game operators and service personnel.

We recommend that you read the manual before preparing your Storm Games cabinet for operation.

The handles located on the rear of the machine are for helping of the moving of the machine NOT for lifting

The machine should not be moved when the door is open, failure to adhere to this may result in the machine falling over and causing a serious injury.

The machine should be standing on a level and stable floor.

ELECTRICAL SAFETY CAUTION RISK OF ELECTRIC SHOCK

Between 220 Volts & 240 Volts is present within the machine. Only suitably qualified personnel should carry out servicing of the machine. Disconnect from the mains supply before removing any parts.

SAFE CONNECTION TO SUPPLY

To ensure the safe operation of this machine it must be connected to the mains supply using an approved power cord, which meets the requirements of IEC227. This cord must have an IEC approved connector at one end and an approved 13-amp plug fitted with a 5-amp fuse at the other.

COMPONENT DISPOSAL

Lithium batteries

The lithium battery as used in SGT products must only be replaced with the same or an equivalent type as recommended by the manufacturer.

The Dell PC battery is a CR2032 button cell which is located underneath the Dell PC PSU assembly. To change the battery undo the 3 fixings securing the Dell PSU and flip the battery cell out.

Disposal

In accordance with the EU Batteries Directive. Batteries must only be disposed of in a manner described by the battery manufacturer, or returned to the manufacturer for safe disposal. The battery must not be disposed of in the domestic waste.

Recycling Information

SGT advise that this product should not be disposed of with household waste. It should be deposited at an appropriate facility to enable recovery and recycling.

SGT also recommend that customers dispose of their used machines in an environmentally sound manner.



The following pages provide detailed instructions of how to use either Storms Refill Menu or Back Office Systems.

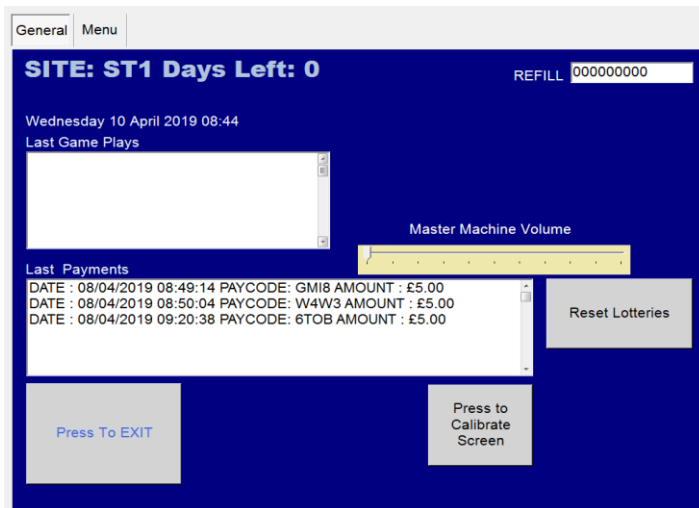
Gaining Access to the Refill Menu

To gain access to the Refill Menu **ALL DOORS NEED TO BE CLOSED**, and then turn the Refill Switch.



Refill Switch located on the right hand side of the cab

When the Refill Key is turned the following page will be displayed.



This screen allows the Site Manager or Engineer to view the Last Game Plays and also lower down the page it displays the last payments that have been.

There are a number of functions that can be used on this page.

Firstly, you can alter the volume level by sliding your finger up & down the **Master Machine Volume Slide**

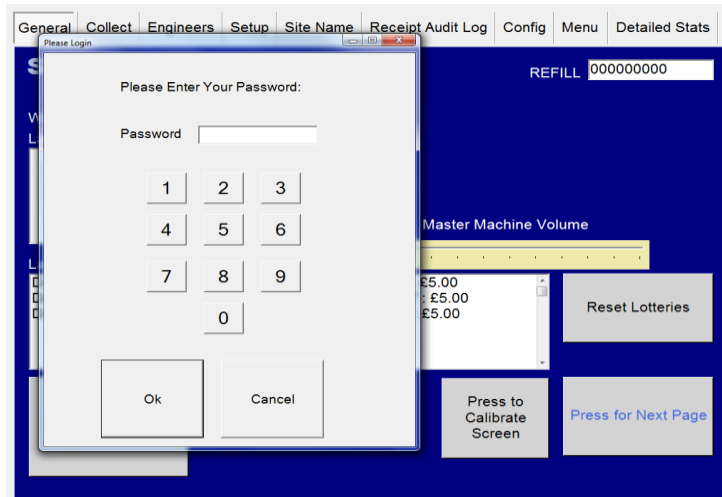
Secondly, you can recalibrate the Touch Screen if the screen is slightly out by simply pressing the **Press to Calibrate Screen** Icon. Once this button is fired you are required to touch the four targets to complete the calibration routine.

Thirdly, you can **Press to Reset all Lotteries** Icon. This allows the Engineer to reset the lottery meters by typing the password of **STORM** with a USB Keyboard.

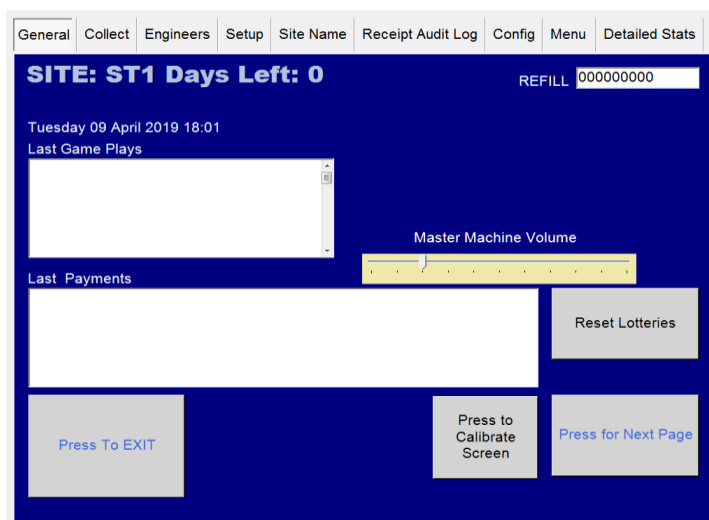
Gaining Access to the Back Office Menu (Engineers Menu)

To gain access to the Back Office / Engineers Menu, simply unlock the top door and open it and turn the Refill Switch, which is located on the right hand side of the cabinet. This will put you into the Back Office Menu where it will request a code to enter into the Back Office.

The code to enter is 000071 then press the OK Button.



General Page



This screen allows the Site Manager or Engineer to view the Last Game Plays and also lower down the page it displays the last payments that have been.

There are three other functions that can be used on this page.

Firstly, you can alter the volume level by sliding your finger up & down the **Master Machine Volume Slide**

Secondly, you can recalibrate the Touch Screen if the screen is slightly out by simply pressing the **Press to Calibrate Screen** Icon. Once this button is fired you are required to touch the four targets to complete the calibration routine.

Thirdly, you can **Press to Reset all Lotteries** Icon. This allows the Engineer to reset the lottery meters by typing the password of **STORM** with a USB Keyboard.

Collect Page

General	Collect	Engineers	Setup	Site Name	Receipt Audit Log	Config	Menu	Detailed Stats
---------	---------	-----------	-------	-----------	-------------------	--------	------	----------------

Back Office		Cash Collection	
Meters		Information	
REFILL	000000000	<input type="text"/>	
CASH In	000000000	Lotto Meters	
CASH Out	000000000	CASHIN 10p	£0.00 CASHOUT 10p £0.00
Ticket IN	000000000	CASHIN 20p	£0.00 CASHOUT 20p £0.00
CHANGE	000000000	CASHIN 50p	£0.00 CASHOUT 50p £0.00
NOTES In	000000000	CASHIN £1	£0.00 CASHOUT £1 £0.00
NOTES Out	000000000	CASHIN £2	£0.00 CASHOUT £2 £0.00
VTP	000000000	TOTAL IN	£0.00 TOTAL OUT £0.00
HANDPAY	000000000		
<input type="button" value="Press To EXIT"/>		<input type="button" value="Press for Next Page"/>	

The Collect screen enables you to see the Short Term Cash In / Out meters so you can calculate how the machine is performing.

This screen also has a breakdown of the Lottery Meters which shows the Cash In and Out per Stake.

Engineers Page

General	Collect	Engineers	Setup	Site Name	Receipt Audit Log	Config	Menu	Detailed Stats
---------	---------	-----------	-------	-----------	-------------------	--------	------	----------------

Back Office
Peripherals Attached
NOTEREADER MISSING
COINMECH OK
HOPPER1 MISSING

Engineers
Hardware Events
NOTOURN
Note Reader
Coin Mech
Coin Route
Hopper

☒ Network Available

Mac1

Mac2

IP1

IP2

VENUE ASSET NUMBER

Lamp Controls

Lamp1 Lamp2 Lamp3 Lamp4 Lamp5

Lamp6 Lamp7 Lamp8 Lamp9 Lamp10

The Engineers Page is to assist the engineers if there is a fault on the machine.

Peripherals Attached – This allows the engineer to see if the CC Talk line is working ok and if the Coin Mech, Hopper & Note Acceptor is visible and working.

Zero Credit – Allows the engineer to reset the credits back to Zero.

Lamp Controls – Lets the engineer fire each individual lamp on the buttons.

Hardware Events – Once a button is pressed or a coin or note inserted it will appear here.

Coin Route – Allows engineer to divert the £1 either into the hopper or cash box.

Hopper – If fitted, the engineer can either pay 1 x £1 coin at a time or dump the hopper content.

Using Mars / Future Logic – By pressing this button this allows you to toggle between the Mars and Future Logic TITO systems.

Use TITO / Disable TITO – This enables and disables the TITO system.

Set Up

General Collect Engineers **Setup** Site Name Receipt Audit Log Config Menu Detailed Stats

Back Office Setup

Broadband and EDC

This Machine is NOT connected to broadband

BACTA EDC UNIT is DISABLED

SELECTED COM PORT
COM3

Receipt Printer

PRINTER is OFF

Use Receipt for payouts only OVER (pence)

0 INC DEC

Press To EXIT

Press for Next Page

Printer – If a printer is fitted this allows you to turn the printer off/ on, also by pressing the **INC & DEC Icons** this allows you to choose the printer payout level the customer requires.

BACTA EDC Unit – Enables you to Enable or Disable the Data Retrieval Unit. **Data units must be connected to Serial Port Com 3 on the Quixant PC.**

Venue Name Page

General Collect Engineers Setup **Site Name** Receipt Audit Log Config Menu Detailed Stats

Back Office Venue Name

This is the name that will appear on all receipts

Venue Name GOLDEN SLOTS

1 2 3 4 5 6 7 8 9 0

Q W E R T Y U I O P DELETE

A S D F G H J K L

Z X C V B N M

SPACE

SAVE NAME

Press To EXIT

Press for Next Page

This allows the engineer to input the site name on ticket payout kiosks.

Receipt Audit Log Page

General Collect Engineers Setup Site Name Receipt Audit Log Config Menu Detailed Stats

Back Office **Receipt Audit Log**

DATE : 16/06/2015 PAYCODE: O08L AMOUNT : £64.00
DATE : 16/06/2015 PAYCODE: GRP1 AMOUNT : £100.00
DATE : 16/06/2015 PAYCODE: Y0SC AMOUNT : £60.00
DATE : 16/06/2015 PAYCODE: 34DN AMOUNT : £64.00
DATE : 16/06/2015 PAYCODE: 68W0 AMOUNT : £80.00
DATE : 17/06/2015 PAYCODE: 7UPX AMOUNT : £50.00
DATE : 17/06/2015 PAYCODE: 6KNK AMOUNT : £64.00
DATE : 17/06/2015 PAYCODE: GA1C AMOUNT : £80.00
DATE : 17/06/2015 PAYCODE: B8GM AMOUNT : £84.00
DATE : 22/06/2015 PAYCODE: QDTI AMOUNT : £47.00
DATE : 22/06/2015 PAYCODE: GJ7O AMOUNT : £1.00
DATE : 22/06/2015 PAYCODE: 3PJU AMOUNT : £6.00
DATE : 22/06/2015 PAYCODE: JU52 AMOUNT : £4.00
DATE : 22/06/2015 PAYCODE: 1J63 AMOUNT : £2.00

Clear Down Receipts Print Off Receipt Audit

Press To EXIT Press for Next Page

The Receipt Audit Log allows the collector or engineer to verify the tickets that have been paid out.

Clear Down Receipts – Allows you to clear the tickets that have been paid out and verified.

Print Off Receipt Audit - This gives two copies of the cash out receipt and a breakdown of each cash in / out of each lottery stake.

Kiosk ID Number

General Collect Engineers Setup Site Name Receipt Audit Log Config Menu Detailed Stats

Back Office **KIOSK ID NUMBER**

VENUE ID 1 DELETE
Terminal Number 2547 DELETE
Note Serial Number 123456 DELETE

1 2 3
4 5 6
7 8 9
0

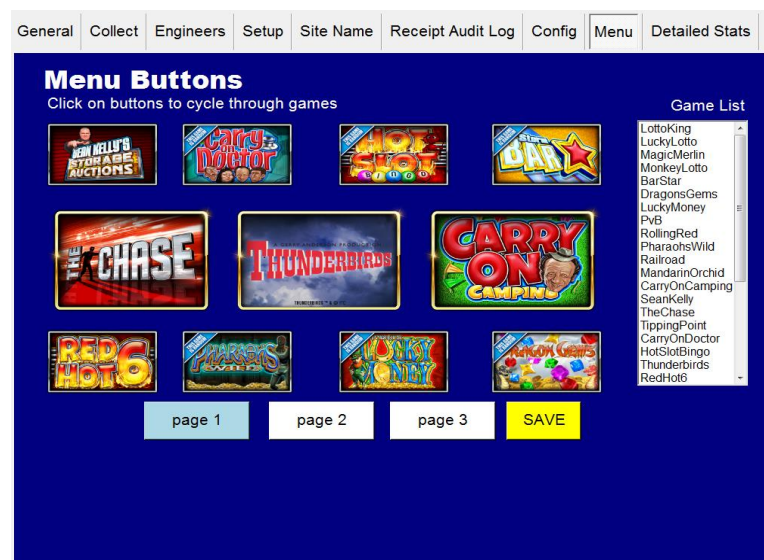
SAVE IT

Press To EXIT Press for Next Page

This enables the machine operator to enter in the Venue ID along with the serial number of the kiosk.

The Note Serial Number is the BNV key for the Note Acceptor. On Innovative Technology products the BNV is normally 123456, but on JCM Vega if fitted this is the last 6 digits of the note acceptor serial number.

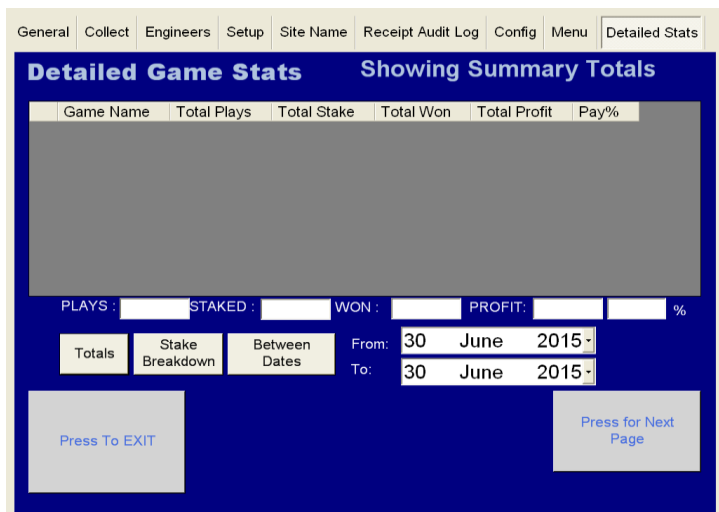
Menu Buttons



This allows the customer to select the games that they would like on each page of the menu.

To select a game that you want to change, keep tapping on the game tile position then tap the tile till you reach the required game and then press save.

Detailed Game Stats



The Detailed Stats page gives an in depth view of the stats screen.

Total Button – Gives you a total overview of how the machine is performing. As pictured below, this screen provides a view of the games that have been played, total stake per game, the amount won and the total profit across all stakes.

Showing Stake Breakdown Button

General Collect Engineers Setup Site Name Receipt Audit Log Config Menu Detailed Stats

Detailed Game Stats Showing Summary Totals

Game Name	Total Plays	Total Stake	Total Won	Total Profit	Pay%
-----------	-------------	-------------	-----------	--------------	------

PLAYS : STAKED : WON : PROFIT: %

Totals Stake Breakdown Between Dates

From: 30 June 2015 To: 30 June 2015

Press To EXIT Press for Next Page

Stake Breakdown - This lists what game has been played on each of the different stakes and what profit has been made on that stake per game.

Between Dates Button

General Collect Engineers Setup Site Name Receipt Audit Log Config Menu Detailed Stats

Detailed Game Stats Showing Summary Totals

Game Name	Total Plays	Total Stake	Total Won	Total Profit	Pay%
-----------	-------------	-------------	-----------	--------------	------

PLAYS : STAKED : WON : PROFIT: %

Totals Stake Breakdown Between Dates

From: 30 June 2015 To: 30 June 2015

Press To EXIT Press for Next Page

Between Two Dates – This allows the Engineer / Site to see how the machine has performed over a certain amount of time.

FOR ANY TECHNICAL QUERIES PLEASE CALL STORM GAMES ON 01902 374124 Ext 3

Machine Parts Description



Quixant Qxi 6000 PC Plug Locations

