

**Storm Games**

**Showbiz Lotto B3a Neon Cabinet**



## **SAFETY NOTICES**

The following safety instructions apply to all game operators and service personnel.

We recommend that you read the manual before preparing your Storm Games cabinet for operation.

The handles located on the rear of the machine are for helping of the moving of the machine NOT for lifting

The machine should not be moved when the door is open, failure to adhere to this may result in the machine falling over and causing a serious injury.

The machine should be standing on a level and stable floor.

## **ELECTRICAL SAFETY CAUTION RISK OF ELECTRIC SHOCK**

Between 220 Volts & 240 Volts is present within the machine. Only suitably qualified personnel should carry out servicing of the machine. Disconnect from the mains supply before removing any parts.

## **SAFE CONNECTION TO SUPPLY**

To ensure the safe operation of this machine it must be connected to the mains supply using an approved power cord, which meets the requirements of IEC227. This cord must have an IEC approved connector at one end and an approved 13-amp plug fitted with a 5-amp fuse at the other.

## **COMPONENT DISPOSAL**

### **Lithium batteries**

The lithium battery as used in SGT products must only be replaced with the same or an equivalent type as recommended by the manufacturer.

The Dell PC battery is a CR2032 button cell which is located underneath the Dell PC PSU assembly. To change the battery undo the 3 fixings securing the Dell PSU and flip the battery cell out.

### **Disposal**

In accordance with the EU Batteries Directive. Batteries must only be disposed of in a manner described by the battery manufacturer, or returned to the manufacturer for safe disposal. The battery must not be disposed of in the domestic waste.

### **Recycling Information**

SGT advise that this product should not be disposed of with household waste. It should be deposited at an appropriate facility to enable recovery and recycling.

SGT also recommend that customers dispose of their used machines in an environmentally sound manner.



The following pages provide detailed instructions of how to use either Storms Refill Menu or Back Office Systems.

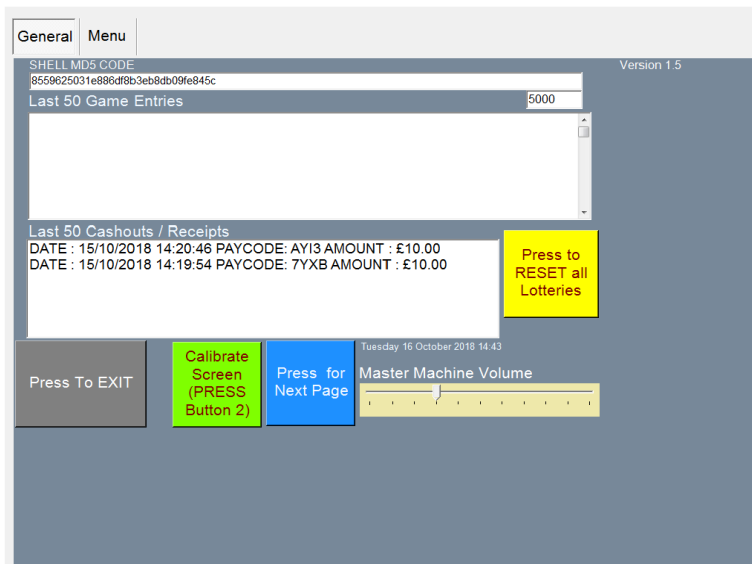
### **Gaining Access to the Refill Menu**

To gain access to the Refill Menu **ALL DOORS NEED TO BE CLOSED**, and then turn the Refill Switch.



Refill Switch located on the right hand side of the cab

When the Refill Key is turned the following page will be displayed.



This screen allows the Site Manager or Engineer to view the Last Game Plays and also lower down the page it displays the last payments that have been.

There are a number of functions that can be used on this page.

Firstly, you can alter the volume level by sliding your finger up & down the **Master Machine Volume Slide**

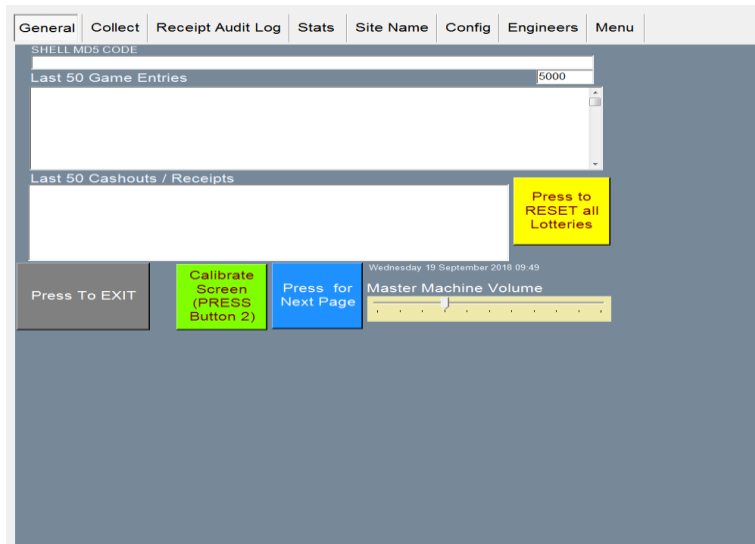
Secondly, you can recalibrate the Touch Screen if the screen is slightly out by simply pressing the **Press to Calibrate Screen** Icon. Once this button is fired you are required to touch the four targets to complete the calibration routine.

Thirdly, you can **Press to Reset all Lotteries** Icon. This allows the Engineer to reset the lottery meters by typing the password of **STORM** with a USB Keyboard.

## Gaining Access to the Back Office Menu (Engineers Menu)

To gain access to the Back Office / Engineers Menu, simply unlock the top door and open it. This will put you into the Back Office Menu.

## General Page



This screen allows the Site Manager or Engineer to view the Last Game Plays and also lower down the page it displays the last payments that have been.

There are three other functions that can be used on this page.

Firstly, you can alter the volume level by sliding your finger up & down the **Master Machine Volume Slide**

Secondly, you can recalibrate the Touch Screen if the screen is slightly out by simply pressing the **Press to Calibrate Screen** Icon. Once this button is fired you are required to touch the four targets to complete the calibration routine.

Thirdly, you can **Press to Reset all Lotteries** Icon. This allows the Engineer to reset the lottery meters by typing the password of **STORM** with a USB Keyboard.

## Collect Page

The Collect Page interface features a top navigation bar with tabs: General, Collect, Receipt Audit Log, Stats, Site Name, Config, Engineers, and Menu. The main content area is titled "Showing Short Term Meters" and "Cash Collection". It displays a grid of meters for various denominations, each with a balance field and a label. At the bottom, there are three buttons: "Press MORE GAMES To EXIT", "Display Short Term Meters", and "Press for Next Page".

Meter Type	Balance	Denomination	Balance	Denomination	Balance
REFILL	000000000	CASHIN 10p	£0.00	OUT 10p	£0.00
CASH In	000000000	CASHIN 20p	£0.00	OUT 20p	£0.00
NOTES In	000000000	CASHIN 50p	£0.00	OUT 50p	£0.00
CASH Out	000000000	CASHIN £1	£0.00	OUT £1	£0.00
VTP	000000000	CASHIN £2	£0.00	OUT £2	£0.00

Buttons: Press MORE GAMES To EXIT, Display Short Term Meters, Press for Next Page

The Collect screen enables you to see the Short Term Cash In / Out meters so you can calculate how the machine is performing.

This screen also has several other functions to assist the Engineer / Collector.

## Receipt Audit Log Page

The Receipt Audit Log Page interface features a top navigation bar with tabs: General, Collect, Receipt Audit Log, Stats, Site Name, Config, Engineers, and Menu. The main content area is titled "Receipt Audit" and contains a large empty box for displaying receipts. At the bottom, there are three buttons: "Clear Down Receipts", "Print Off Receipt Audit", and "Press PLAY for Next Page".

Buttons: Clear Down Receipts, Print Off Receipt Audit, Press PLAY for Next Page

The Receipt Audit Log allows the collector or engineer to verify the tickets that have been paid out

**Clear Down Receipts** – Allows you to clear the tickets that have been paid out and verified.

**Print Off Receipt Audit** - This gives two copies of the cash out receipt and also a breakdown of each cash in / out of each lottery stake.

Detailed Game Stats

General

Collect

Receipt Audit Log

Stats

Site Name

Config

Engineers

Menu

Game Stats

PLAYS

Cash IN

OUT

Profit

Pay%

Next Page of Stats

TOTALS

textBox43

textBox42

textBox41

textBox40

Press To EXIT

Reset Stats ( Centre Button)

Press for Next Page

The Detailed Stats page gives an in depth view of how each game is performing, how much cash has gone in that game and been paid out along with an overall profit and payout percentage .

**Reset Stats Button** – This resets all the Stats history.

Venue Name Page

General

Collect

Receipt Audit Log

Stats

Site Name

Config

Engineers

Menu

Venue Name

This is the name that will appear on all receipts

Venue Name Club Lotto Hot Slots

1234567890

QWERTYUIOP

ASDFGHJKL

ZXCVBNMDELETE

SPACE

SAVE NAME

Press for Next Page

This allows the engineer to input the site name on ticket payout kiosks.

## Kiosk ID Number

The screenshot shows a web interface with a top navigation bar containing tabs: General, Collect, Receipt Audit Log, Stats, Site Name, Config, Engineers, and Menu. The 'Config' tab is active. Below the navigation bar, the title 'Venue and Terminal ID' is displayed in yellow. The main area contains two input fields: 'Venue ID' with the value '1' and a 'DELETE' button, and 'Terminal Number' with the value '1' and a 'DELETE' button. Below these fields is a numeric keypad with buttons for digits 1 through 9 and 0. To the right of the keypad is a 'SAVE IT' button.

The Venue / Terminal ID allows the operator to set each kiosk to an allocated ID, so that the tickets from another one of the same operators site down the road does not accept in this kiosk.

## Engineers Page

The screenshot shows a web interface with a top navigation bar containing tabs: General, Collect, Receipt Audit Log, Stats, Site Name, Config, Engineers, and Menu. The 'Engineers' tab is active. Below the navigation bar, the title 'Engineers' is displayed in yellow. The main area is divided into several sections. On the left, there is a 'Peripherals Attached' section with a warning message: 'WARNING: NO Coin Mech' and 'WARNING: NO Note Reader'. To the right of this is an 'Event' section with a text input field and three buttons: 'Enable', 'Disable', and 'Hopper'. Below the 'Event' section is a 'Category of Machine' section with a red button labeled 'CAT B3a'. In the bottom left, there is a button labeled 'Press MORE GAMES To EXIT'. In the bottom right, there is a blue button labeled 'Press for Next Page'. The central area contains a grid of buttons labeled 'Lamp1' through 'Lamp8'.

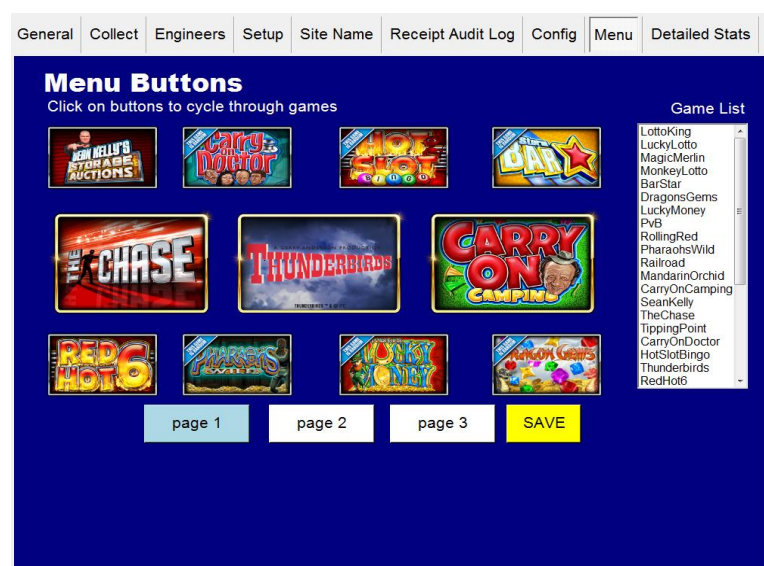
The Engineers screen enables the engineers to completely check all of the peripherals in the machine without adding to the Cash In and Cash out meters of the machine

The peripherals attached to the machine (e.g. Coin Mech & Note Acc) should be shown in the **“Peripherals Attached Window”**

Switches and Buttons can be tested and are displayed in the Event window.



## Menu Buttons

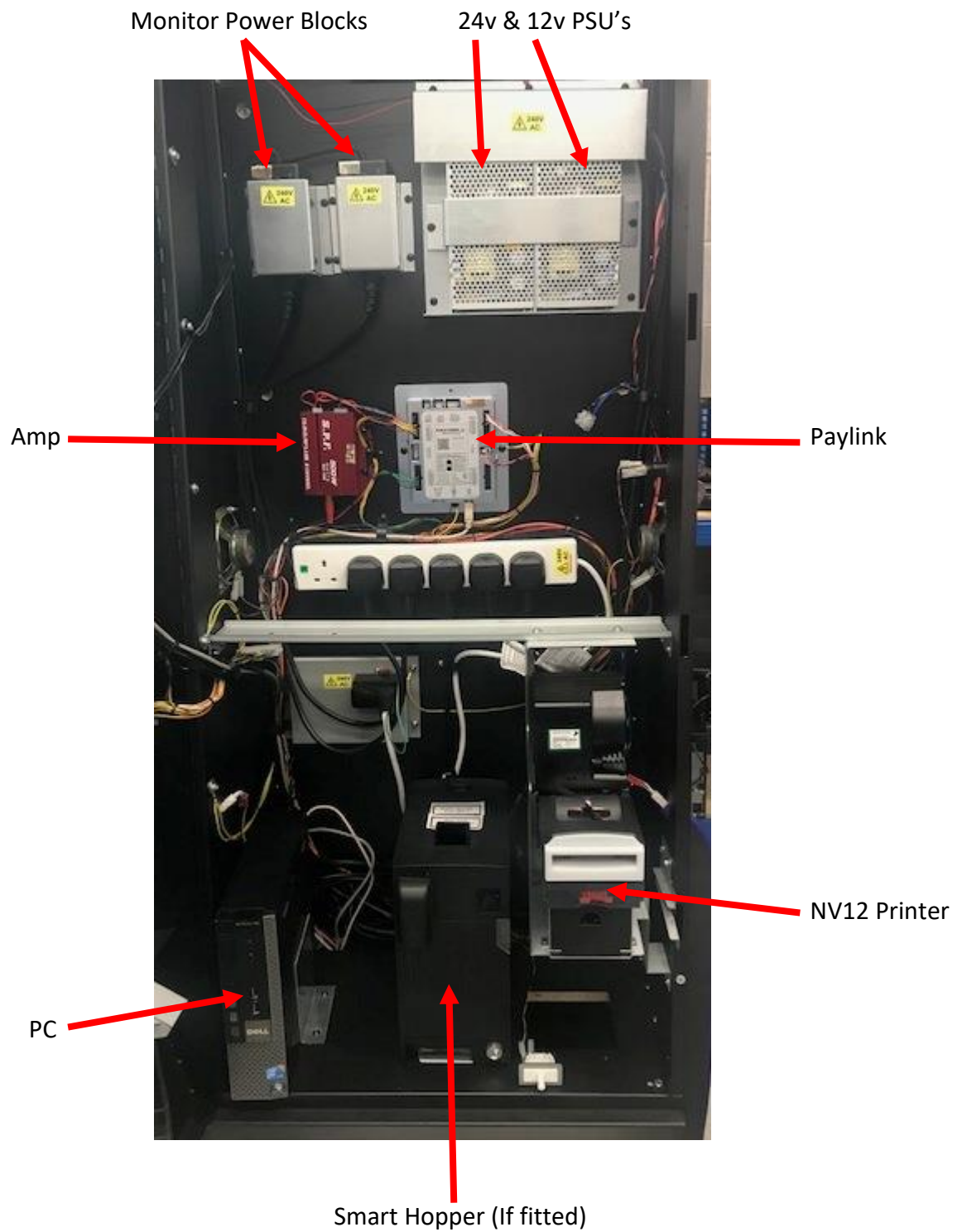


This allows the customer to select the games that they would like on each page of the menu.

To select a game that you want to change, keep tapping on the game tile position then tap the tile till you reach the required game and then press save.

**FOR ANY TECHNICAL QUERIES PLEASE CALL STORM GAMES ON 01902 374124 Ext 3**

## Machine Parts Description



## Dell 780 PC Ports

