

# Storm Games

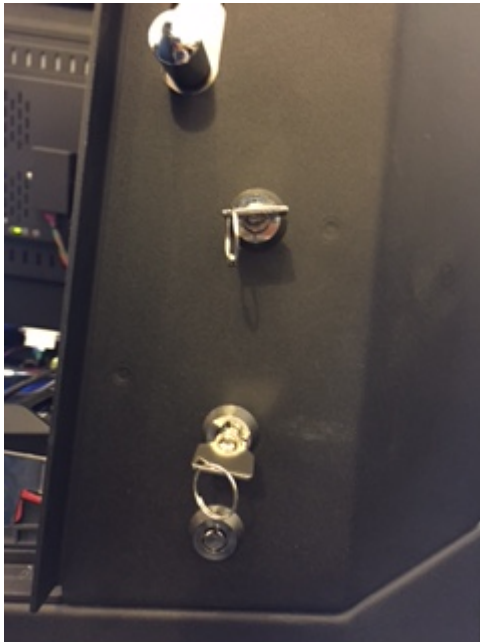
## Golden Lotto Tempest User Guide



The following pages provide detailed instructions of how to use either Storms Refill Menu or Back Office Systems.

### Gaining Access to the Refill Menu

To gain access to the Refill Menu **ALL DOORS NEED TO BE CLOSED**, and then turn the middle Refill Switch.



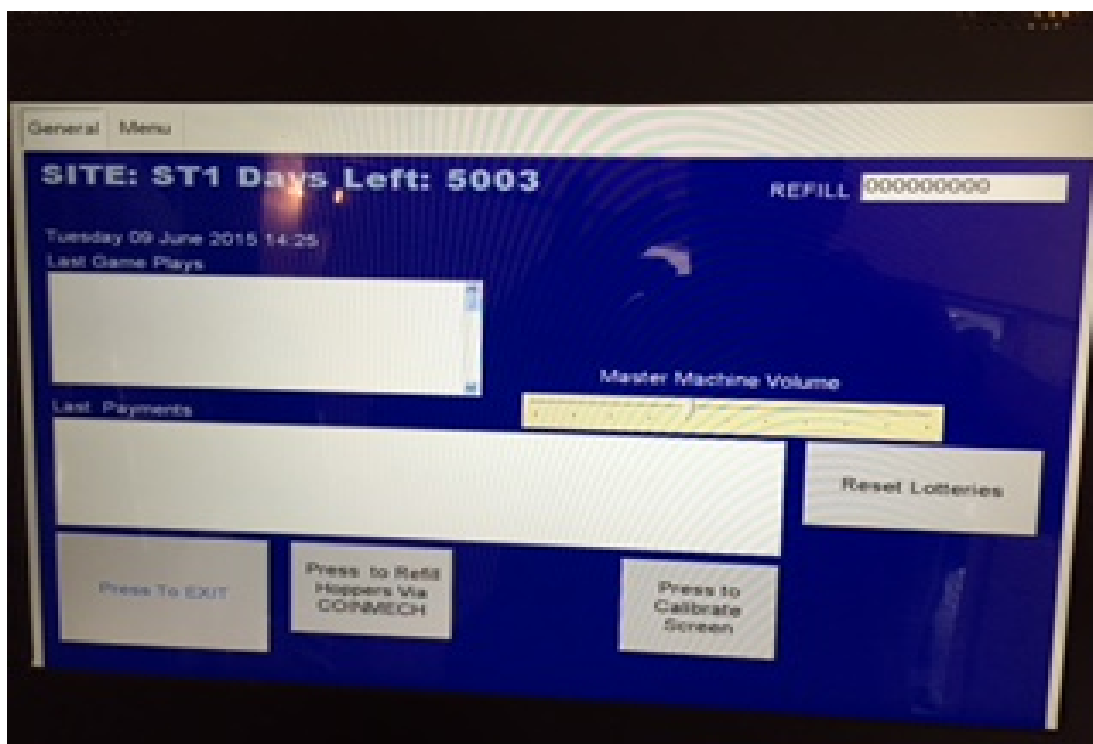
Top Door Locking Latch

Top Door Key (To realise the Latch)

Top Refill / Back Office Switch

Bottom Switch (Not Used)

When the Refill Key is turned the following page will be displayed.



This screen allows the Site Manager or Engineer to view the Last Game Plays and also lower down the page it displays the last payments that have been.

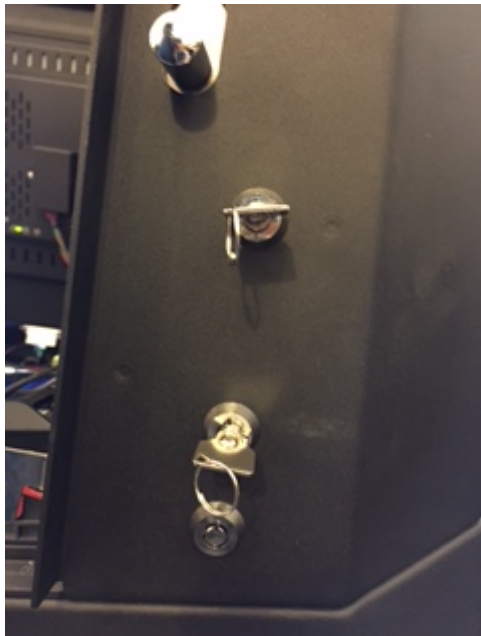
There are two other functions that can be used on this page.

Firstly, you can alter the volume level by sliding your finger up & down the **Master Machine Volume Slide**

Secondly, you can recalibrate the Touch Screen if the screen is slightly out by simply pressing the **Press to Calibrate Screen** Icon. Once this button is fired you are required to touch the four targets to complete the calibration routine.

## Gaining Access to the Back Office Menu (Engineers Menu)

To gain access to the Back Office / Engineers Menu, **OPEN THE TOP DOOR AND ALLOW THE MACHINE TO ALARM**, then turn the middle Refill Switch.



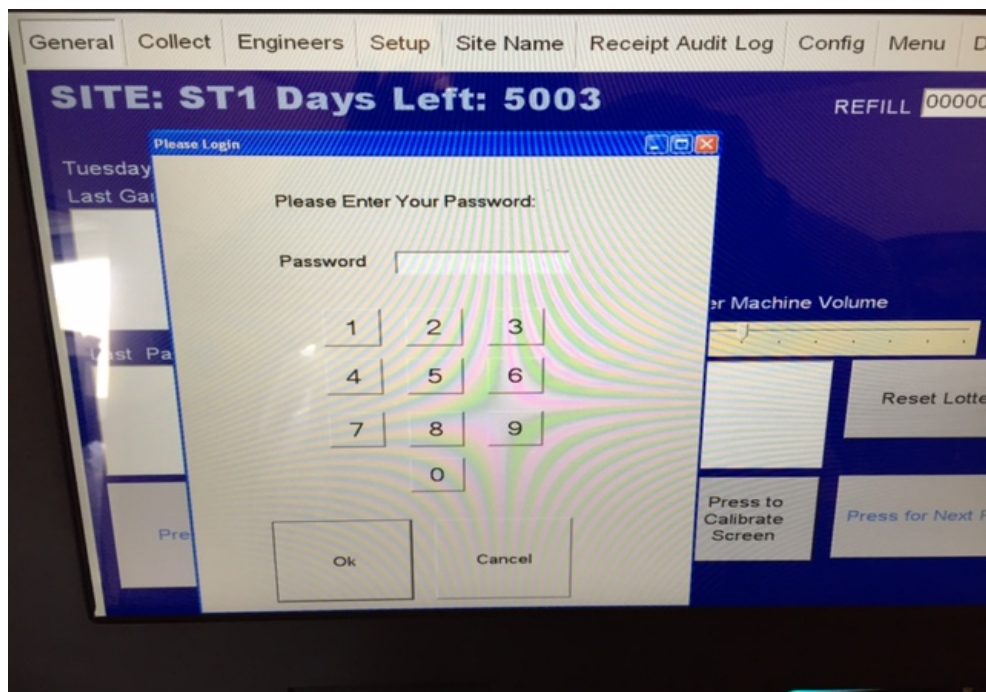
Top Door Locking Latch

Top Door Key (To realise the Latch)

Top Refill / Back Office Switch

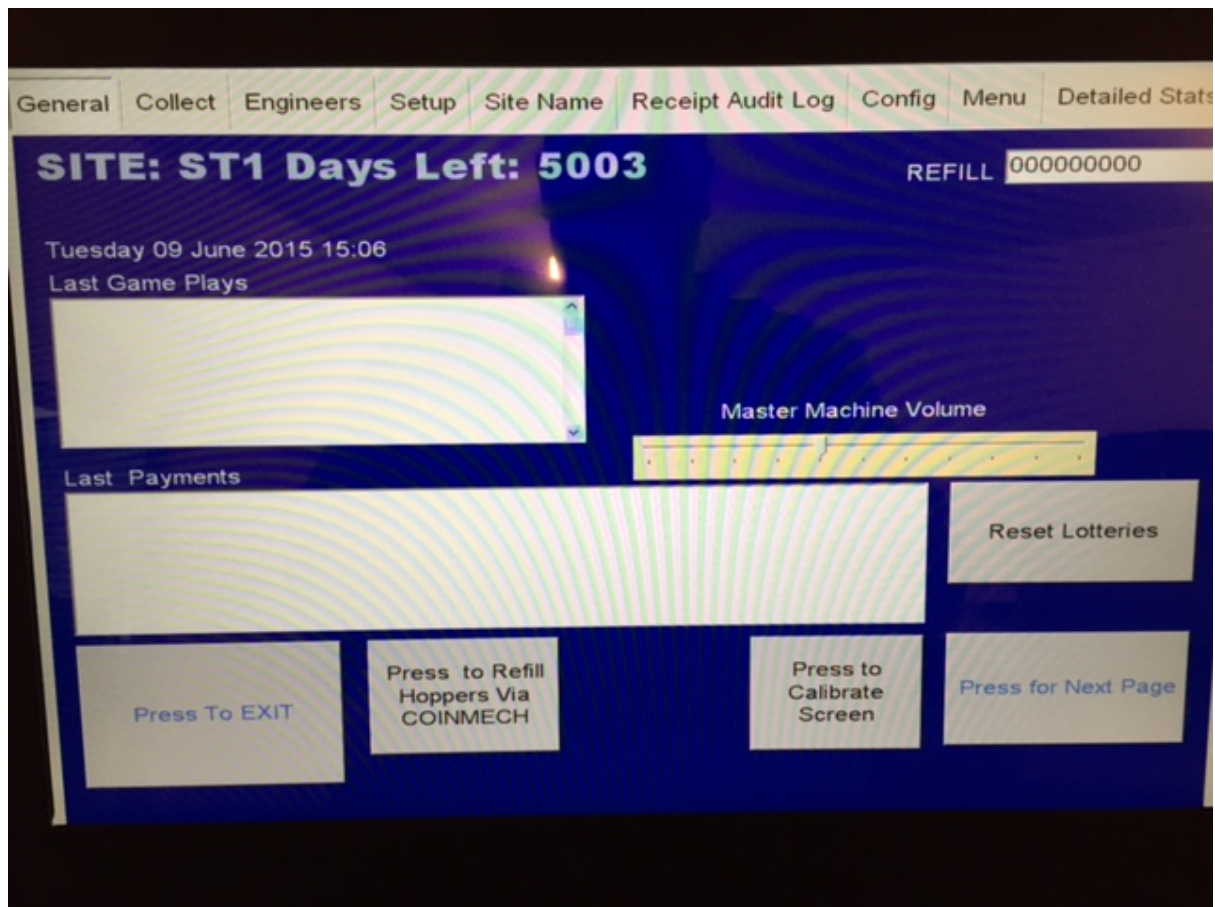
Bottom Switch (Not Used)

Once the Top Refill is activated, the following page will be displayed



On the keyboard on the screen insert the following password to gain access to the full Engineers Menu. **000071 then Ok**

## General Page



This screen allows the Site Manager or Engineer to view the Last Game Plays and also lower down the page it displays the last payments that have been.

There are three other functions that can be used on this page.

Firstly, you can alter the volume level by sliding your finger up & down the **Master Machine Volume Slide**

Secondly, you can recalibrate the Touch Screen if the screen is slightly out by simply pressing the **Press to Calibrate Screen** Icon. Once this button is fired you are required to touch the four targets to complete the calibration routine.

Thirdly, the **Reset Lotteries** icon allows you to reset the lotteries back to the beginning of each lottery sheet. This is password protected so you will need a USB Keyboard and then once pressed you will need to type in the password of **STORM** then press Ok to reset.



## Collect Page

The screenshot displays the 'Collect Page' interface. At the top, a navigation bar includes tabs: General, Collect, Engineers, Setup, Site Name, Receipt Audit Log, Config, Menu, and Detailed Stats. The main area is divided into two sections: 'Back Office' and 'Cash Collection'.

**Back Office Meters:**

REFILL	000000000
CASH In	000000000
CASH Out	000000000
CHANGE	000000000
NOTES In	000000000
NOTES Out	000000000
VTP	000000000
HANDPAY	000000000

**Cash Collection Lotto Meters:**

Information			
Lotto Meters			
CASHIN 10p	£0.00	CASHOUT 10p	£0.00
CASHIN 20p	£0.00	CASHOUT 20p	£0.00
CASHIN 50p	£0.00	CASHOUT 50p	£0.00
CASHIN £1	£0.00	CASHOUT £1	£0.00
CASHIN £2	£0.00	CASHOUT £2	£0.00
TOTAL IN	£0.00	TOTAL OUT	£0.00

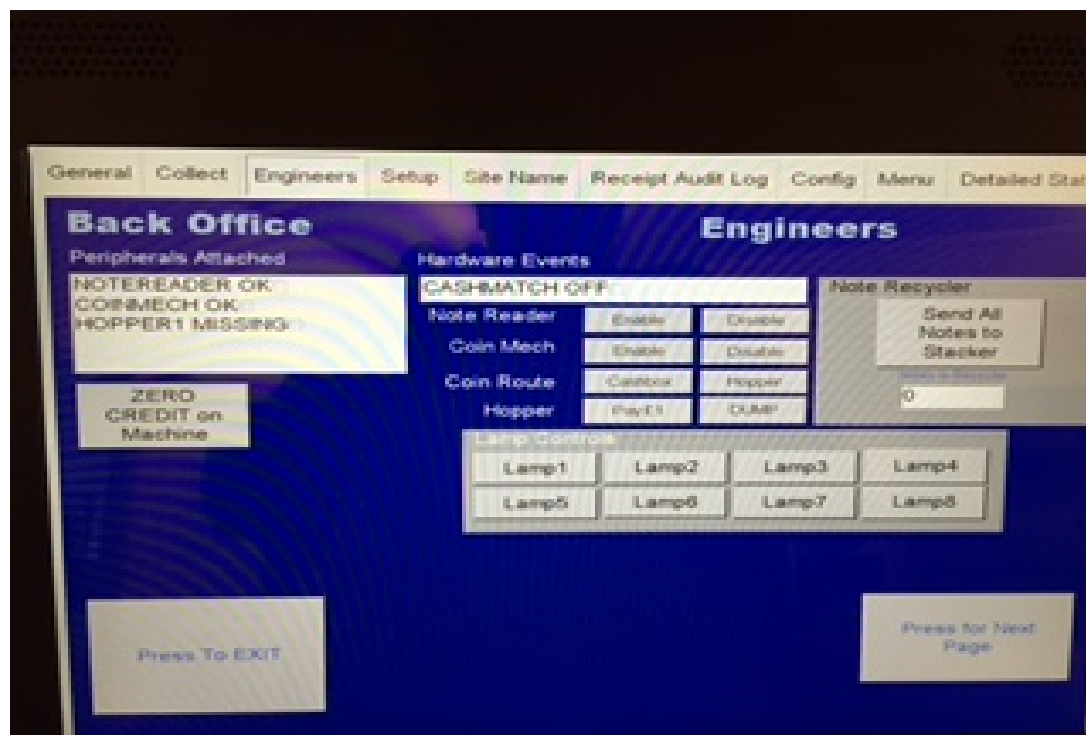
At the bottom, there are two buttons: 'Press To EXIT' on the left and 'Press for Next Page' on the right.

The Collect screen two sets of meters displayed.

Firstly, the **Meters** display the actual physical Cash In / Out figures as per a normal gaming machine and **CANNOT** be reset unless telephoning Storm Games.

The **Lotto Meters** gives a breakdown of how much each lottery is been played and also the Cash In / Out of each lottery stake. This **CAN** be reset to restart the lotteries again by simply going into the **RESET LOTTERIES** icon on the General Page.

## Engineers Page



The Engineers Page is to assist the engineers if there is a fault on the machine

**Peripherals Attached** – This allows the engineer to see if the CC Talk line is working ok and if the Coin Mech, Hopper & Note Acceptor is visible and working.

**Zero Credit** – Allows the engineer to reset the credits back to Zero

**Send all Notes to Stacker** – If the machine has a NV11 fitted, it normally will send one of the note denominations to the recycler unit. This allows you to empty the recycler unit into the stacker at the bottom of the Note Acceptor.

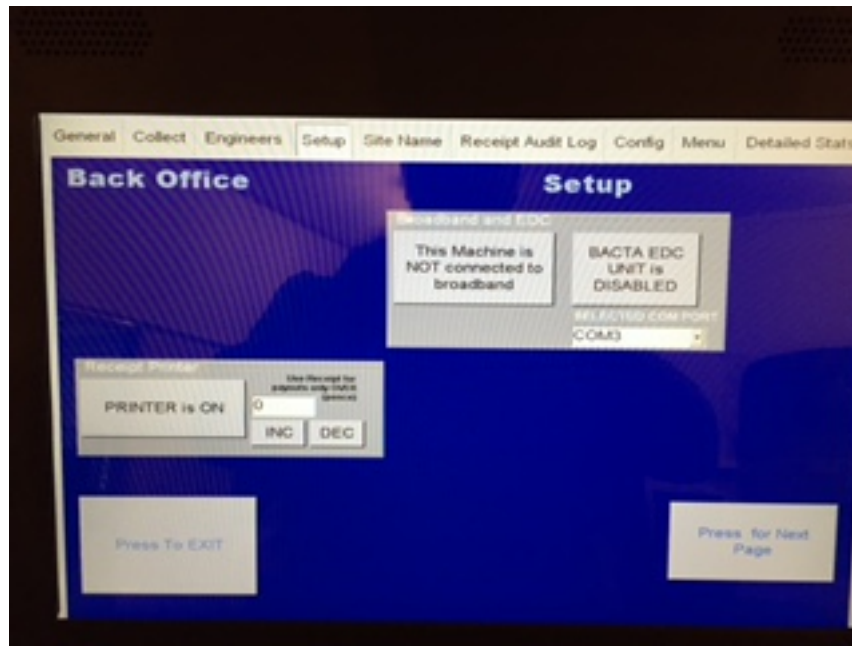
**Lamp Controls** – Lets the engineer fire each individual lamp on the buttons.

**Hardware Events** – Once a button is pressed or a coin or note inserted it will appear here.

**Coin Route** – Allows engineer to divert the £1 either into the hopper or cash box

**Hopper** – If fitted, the engineer can either pay 1 x £1 coin at a time or dump the hopper content.

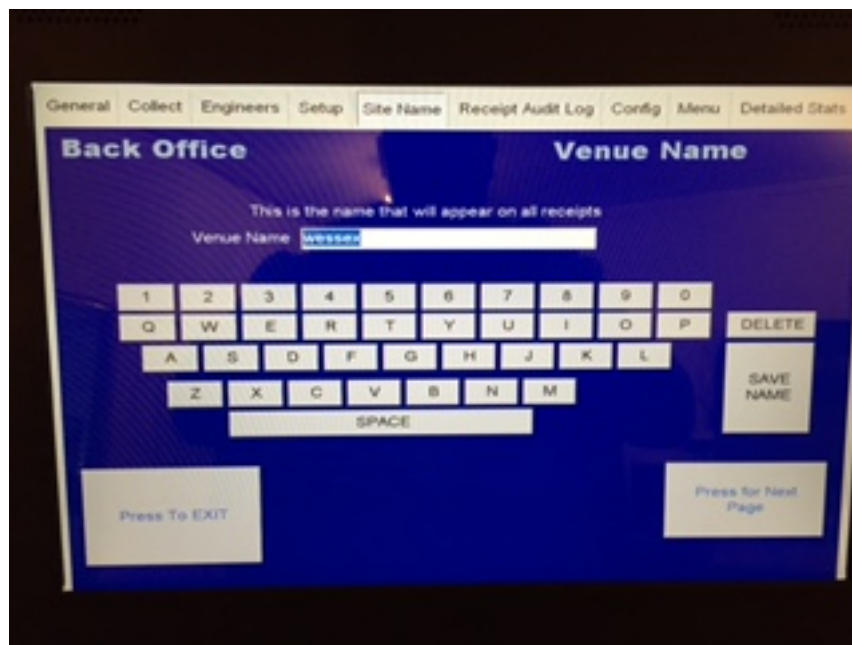
## Set Up Page



**Receipt Printer** – Allows the Printer to be turned On/Off and also set printer payout over a certain amount. Printer must **ALWAYS BE ON FOR B3A**.

**BACTA EDC** – This is only used for Data Capture units.

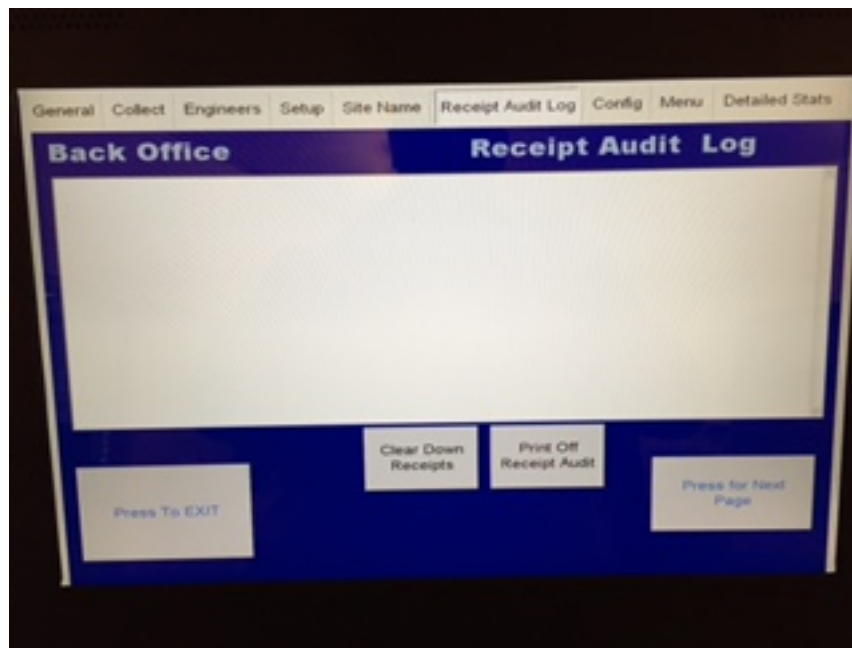
## Venue Name Page



This allows the engineer to input the site name for the B3a tickets.



## Receipt Audit Log Page

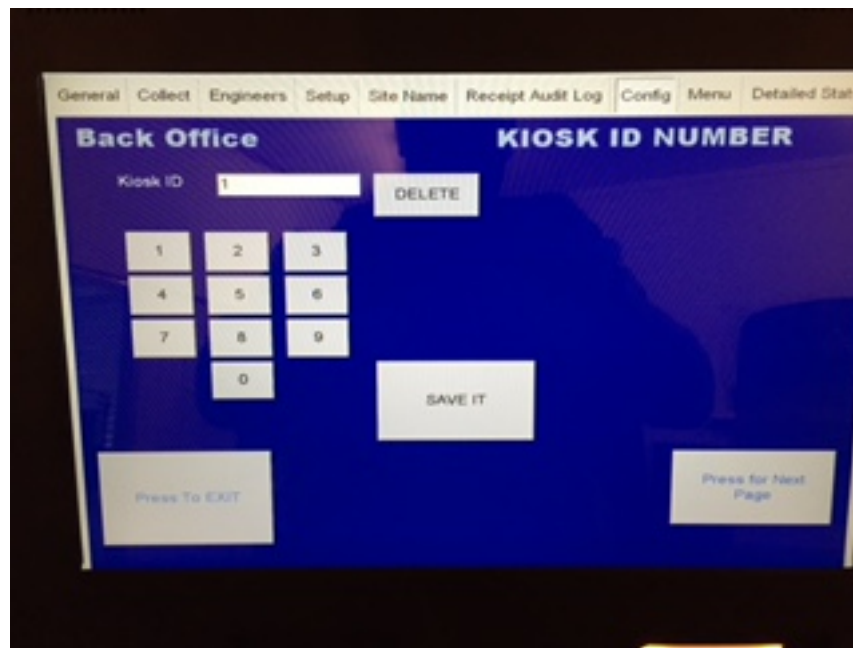


The Receipt Audit Log allows the collector or engineer to verify the tickets that have been paid out

**Clear Down Receipts** – Allows you to clear the tickets that have been paid out and verified.

**Print Off Receipt Audit** - This gives two copies of the cash out receipt and also a breakdown of each cash in / out of each lottery stake.

## Kiosk ID Number



This enables the machine supplier to enter in the serial number of the kiosk, but rarely used.

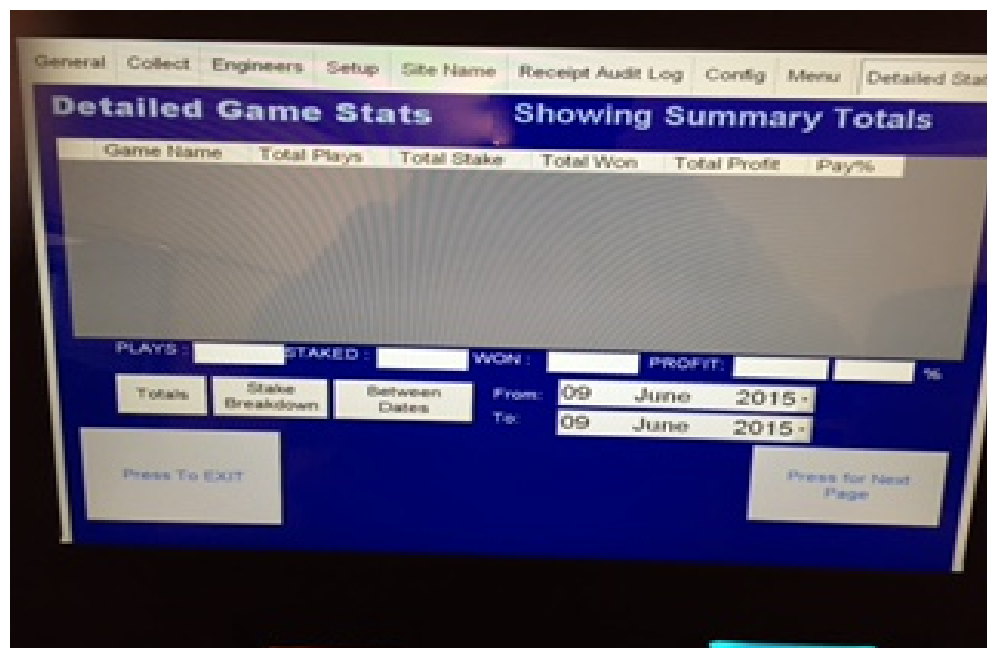
## Game Menu



We have tried to make it easier for the Engineer / Site to select what games they require on the terminal.

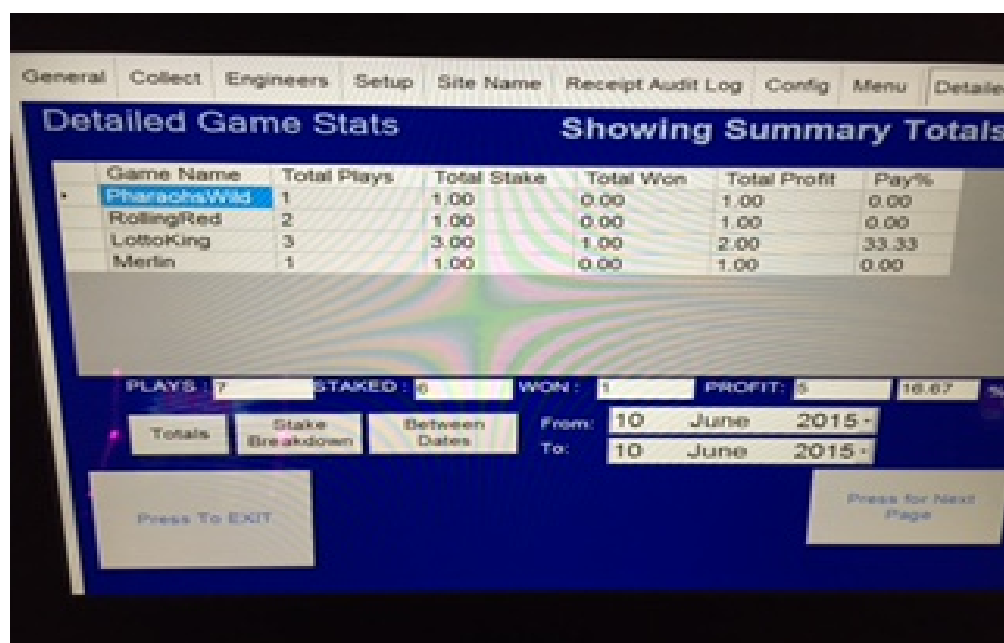
You can either select **6 games** that you require, by selecting the games from the list on the left hand side of the screen, then press the **Use Menu Button** or you can press the **Select All Lotto Games Button** then press the **Use Menu Button** to select the **12 game** package.

## Detailed Game Stats

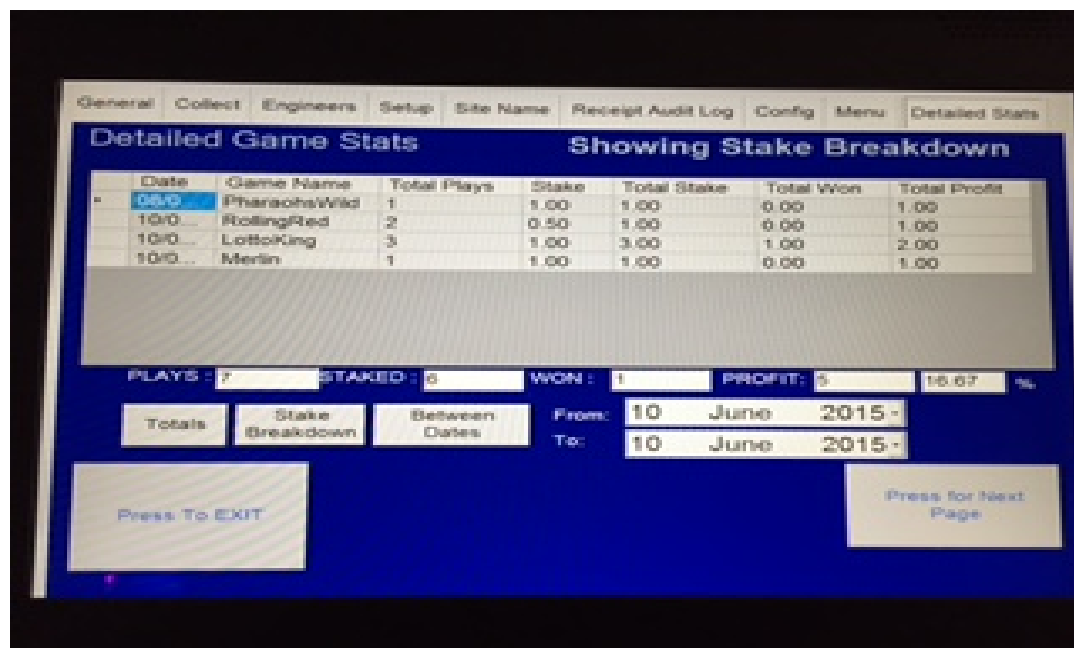


The Detailed Stats page gives an in depth view of the stats screen.

**Total Button** – Gives you a total overview of how the machine is performing. As pictured below, this screen provides a view of the games that have been played, total stake per game, the amount won and the total profit across all stakes.

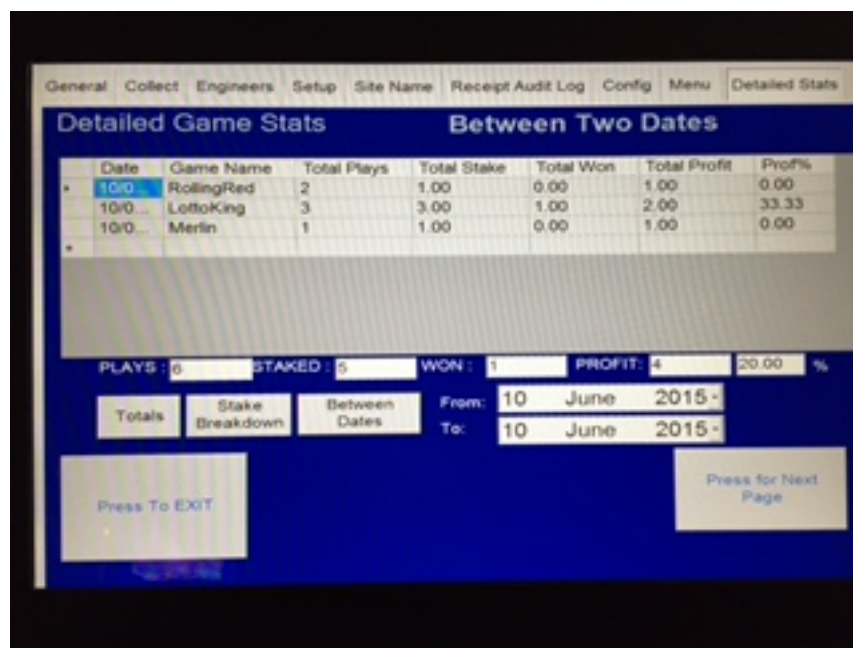


## Showing Stake Breakdown Button



**Stake Breakdown** - This lists what game has been played on each of the different stakes and what the profit has been made on that stake per game.

## Between Dates Button



**Between Two Dates** – This allows the Engineer / Site to see how the machine has performed over a certain amount of time.

**FOR ANY TECHNICAL QUERIES PLEASE CALL STORM GAMES ON 01902 374124**